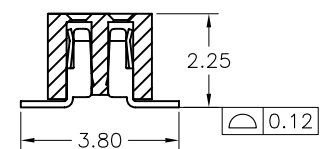
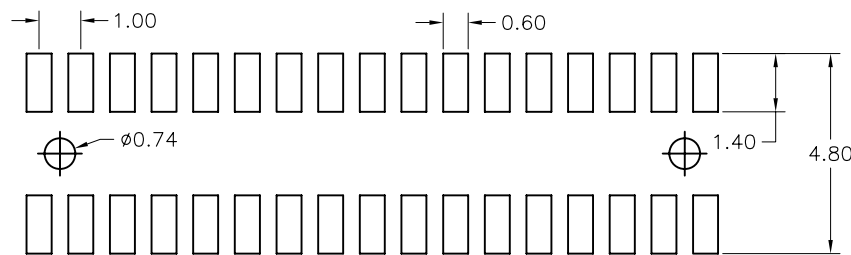
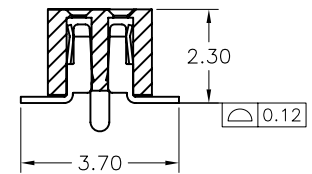
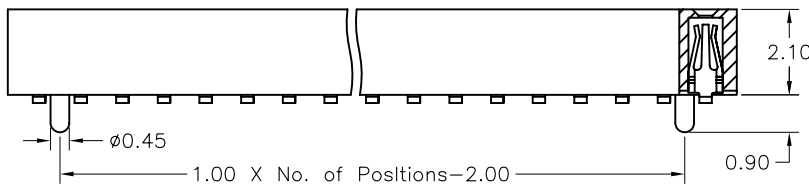
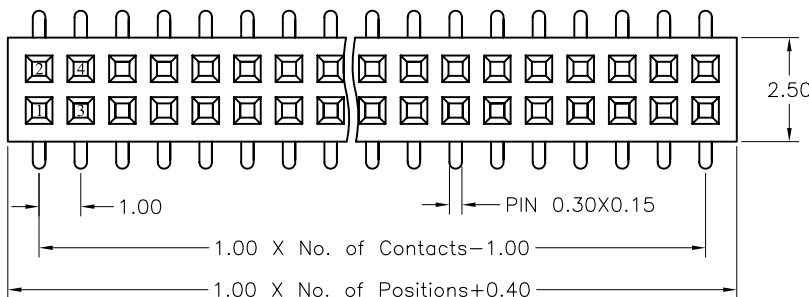


1.00*1.00mm (0.039"*0.039") Female Header, Dual Row, SMT Type H=2.10mm

SPECIFICATIONS

Current Rating : 0.75AMP
 Contact Resistance : 30mΩ Max.
 Insulation Resistance: 1000MΩ Min.
 Withstanding Voltage : 500V AC/minute
 Operation Temperature: -40° C to +105° C
 Contact Material : Phosphor Bronze
 Contact plating : Gold Flash Plated
 Insulator Material : High Temperature Thermoplastic (UL94V-0)
 Standard: PA6T+30%G.F



Recommended PCB Layout

Ordering Information

FEM2211	- XX	XX	A	XX	B 1 A	X
	No. of Pins Per Row 02~50	Contact Plating 01:Gold Flash 02:Gold 2μ'' 03:Gold 3μ'' 04: Tin Duplex Plating 06:Gold Flash/Tin(100μ'')		Serial Number	Material Type B:NYLON 6T C:LCP D:NYLON 9T	Options A:BAG B:TRAY C:TUBE D:TAPE REEL