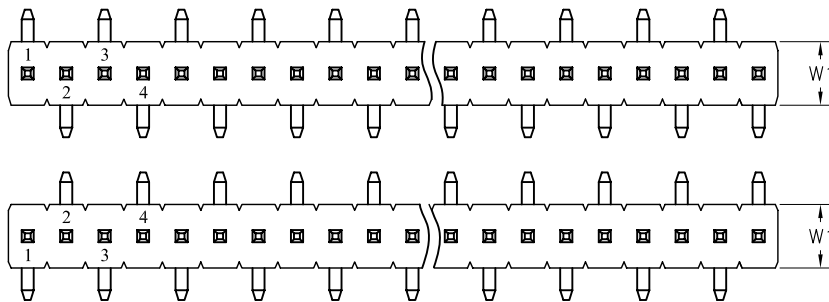


1.27mm (0.050") Pin Header, Single Row, SMT Type H=1.00mm

SPECIFICATIONS

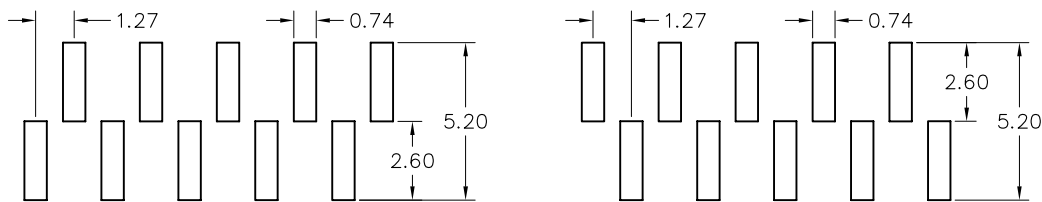
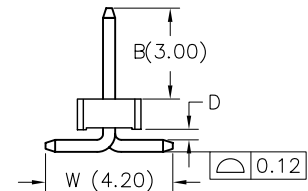
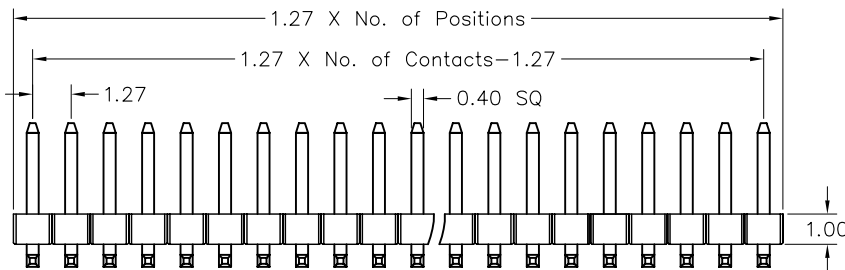
Current Rating : 1AMP
 Contact Resistance : 20mΩ Max.
 Insulation Resistance: 1000MΩ Min.
 Withstanding Voltage : 500V AC/minute
 Operation Temperature: -40° C to +105° C
 Contact Material : Brass
 Contact plating : Gold Flash Plated
 Insulator Material : High Temperature Thermoplastic (UL94V-0)
 Standard: PA6T+30%G.F



B TYPE

A TYPE

H	1.0		1.5		1.7		2.0		2.5	
W	W1	W2	W1	W2	W1	W2	W1	W2	W1	W2
	2.0	3.4	2.0	3.0	2.5	3.0	2.5	3.0	2.5	3.0
V0	1.0	1.06	1.0	0.86	1.25	0.86	1.25	0.86	1.25	0.86



A TYPE

B TYPE

Recommended PCB Layout

Pin Length = $B + 1.00 + D + W/2$

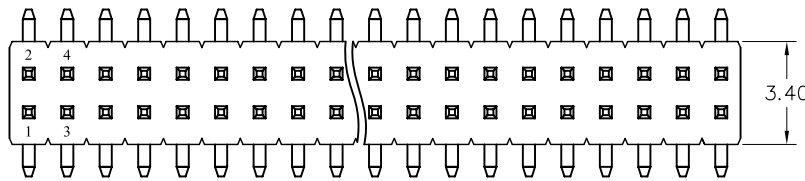
Ordering Information

PCM1101	- XX	XX	A	XX	B 1 B	X
Plastics Height 10: 1.0mm 15: 1.5mm 17: 1.7mm 20: 2.0mm 25: 2.5mm	No. of Pins Per Row 02~50	Contact Plating 01: Gold Flash 02: Gold 2μ'' 03: Gold 3μ'' 04: Tin Duplex Plating 06: Gold Flash/Tin(100μ'')		Serial Number	Material Type B: NYLON 6T C: LCP D: NYLON 9T	Options A: BAG B: TRAY C: TUBE D: TAPE REEL

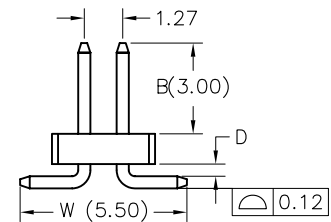
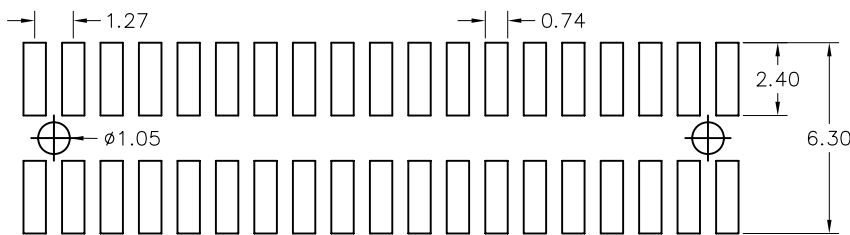
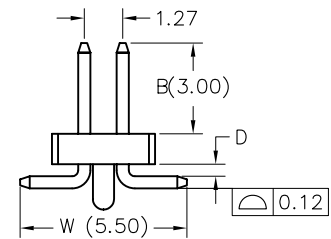
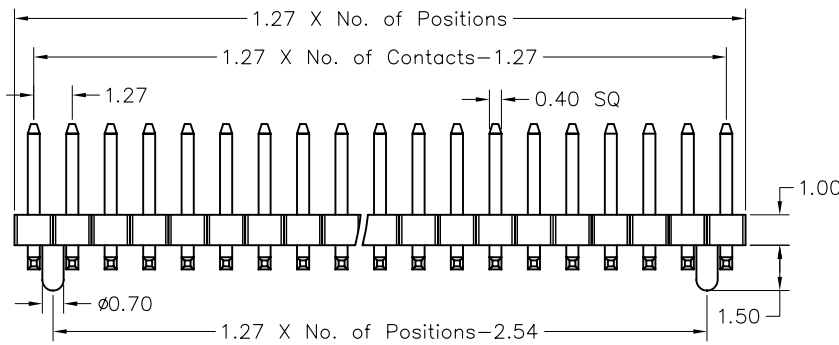
1.27*1.27mm (0.050"*0.050") Pin Header, Dual Row, SMT Type H=1.00mm

SPECIFICATIONS

Current Rating : 1AMP
 Contact Resistance : 20mΩ Max.
 Insulation Resistance: 1000MΩ Min.
 Withstanding Voltage : 500V AC/minute
 Operation Temperature: -40° C to +105° C
 Contact Material : Brass
 Contact plating : Gold Flash Plated
 Insulator Material : High Temperature Thermoplastic (UL94V-0)
 Standard: PA6T+30%G.F



H	1.0		1.5		1.7		2.0		2.5	
W	W1	W2	W1	W2	W1	W2	W1	W2	W1	W2
		2.0	3.4	2.0	3.0	2.5	3.0	2.5	3.0	2.5
V0	1.0	1.06	1.0	0.86	1.25	0.86	1.25	0.86	1.25	0.86



Recommended PCB Layout

$$\text{Pin Length} = B + 1.00 + D + (W - 1.27) / 2$$

Ordering Information

PCM2101	- XX	XX	A	XX	B 1 B	X
Plastics Height	No. of Pins Per Row	Contact Plating	Duplex Plating	Serial Number	Material Type	Options
10:1.0mm 15:1.5mm 17:1.7mm 20:2.0mm 25:2.5mm	02~50	01:Gold Flash 02:Gold 2μ'' 03:Gold 3μ'' 04: Tin	06:Gold Flash/Tin(100μ'')		B:NYLON 6T C:LCP D:NYLON 9T	A:BAG B:TRAY C:TUBE D:TAPE REEL