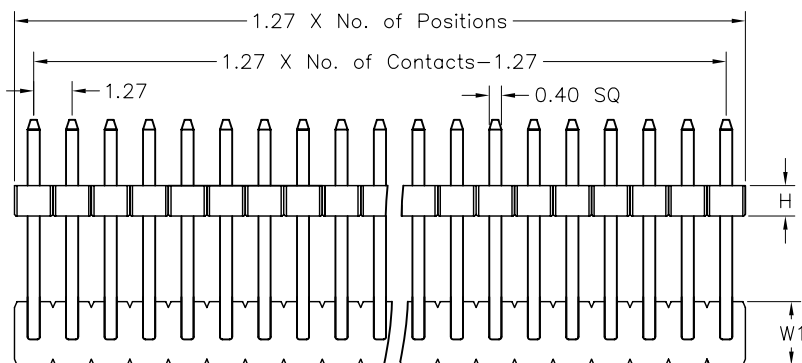


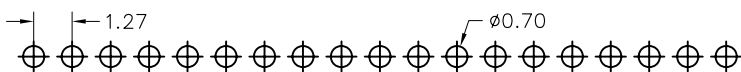
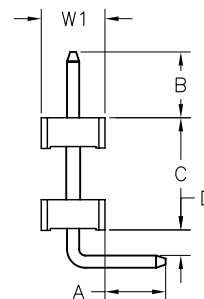
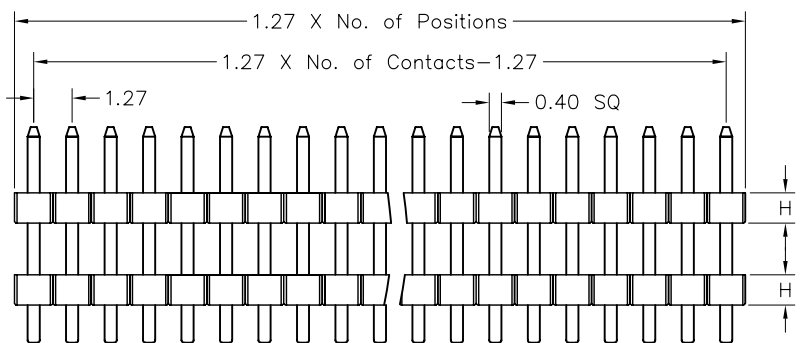
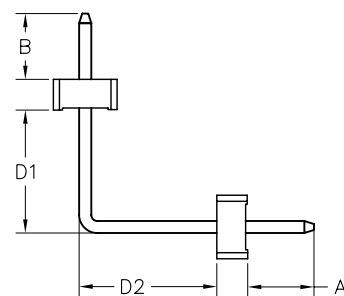
1.27mm (0.050") Board Spacer, Single Row, Right Angle Type H=1.00mm

## SPECIFICATIONS

Current Rating : 1AMP  
 Contact Resistance : 20mΩ Max.  
 Insulation Resistance: 1000MΩ Min.  
 Withstanding Voltage : 500V AC/minute  
 Operation Temperature: -40° C to +105° C  
 Contact Material : Brass  
 Contact plating : Gold Flash Plated  
 Insulator Material : High Temperature Thermoplastic (UL94V-0)  
 Standard: PA6T+30%G. F



H	1.0	1.5	1.7	2.0	2.5
	W1 W2	W1 W2	W1 W2	W1 W2	W1 W2
W	2.0 3.4	2.0 3.0	2.5 3.0	2.5 3.0	2.5 3.0



Recommended PCB Layout

Pin Length = A+B+C+D+1.0(A+B+D1+H+D2-0.6)

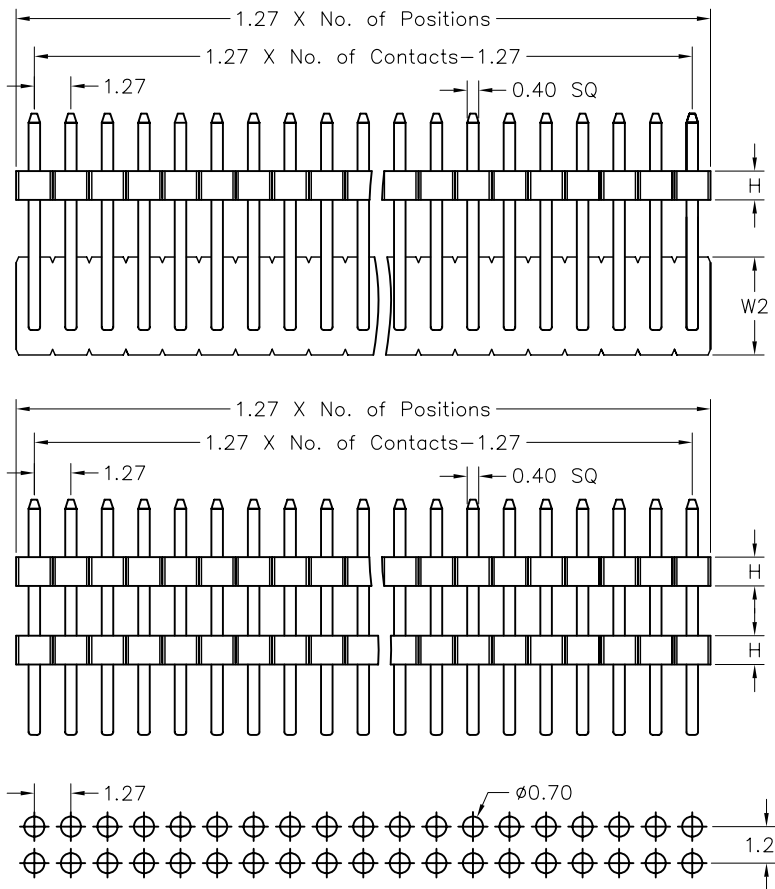
## Ordering Information

PCR1102	- XX	XX	A	XX	B 1 B	X
Plastics Height	No. of Pins Per Row	Contact Plating	Serial Number	Material Type	Options	
10: 1.0mm	02~50	01: Gold Flash		A: PBT	A: BAG	
15: 1.5mm		02: Gold 2μ''		B: NYLON 6T	B: TRAY	
17: 1.7mm		03: Gold 3μ''		C: LCP	C: TUBE	
20: 2.0mm		04: Tin		D: NYLON 9T	D: TAPE REEL	
25: 2.5mm		Duplex Plating				
		06: Gold Flash/Tin(100μ'')				

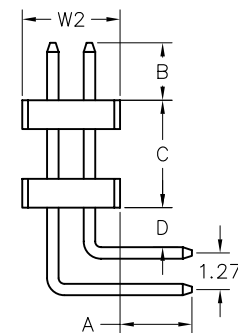
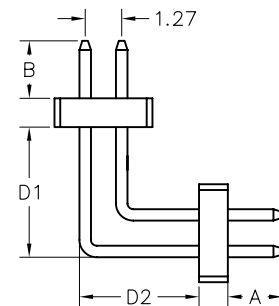
1.27\*1.27mm (0.050"\*0.050") Board Spacer, Dual Row, Right Angle Type H=1.00mm

## SPECIFICATIONS

Current Rating : 1AMP  
 Contact Resistance : 20mΩ Max.  
 Insulation Resistance: 1000MΩ Min.  
 Withstanding Voltage : 500V AC/minute  
 Operation Temperature: -40° C to +105° C  
 Contact Material : Phosphor Bronze  
 Contact plating : Gold Flash Plated  
 Insulator Material : High Temperature Thermoplastic (UL94V-0)  
 Standard: PA6T+30%G. F



H	1.0		1.5		1.7		2.0		2.5	
w	W1	W2	W1	W2	W1	W2	W1	W2	W1	W2
	2.0	3.4	2.0	3.0	2.5	3.0	2.5	3.0	2.5	3.0



Recommended PCB Layout

Pin Length = A+B+C+D+1.05 (A+B+D1+D2-0.6)

## Ordering Information

PCR2102	-	XX	XX	A	XX	B 1 B	X
Plastics Height 10:1.0mm 15:1.5mm 17:1.7mm 20:2.0mm 25:2.5mm	No. of Pins Per Row 02~50	Contact Plating 01:Gold Flash 02:Gold 2μ'' 03:Gold 3μ'' 04: Tin Duplex Plating 06:Gold Flash/Tin(100μ'')	Serial Number	Material Type A:PBT B:NYLON 6T C:LCP D:NYLON 9T	Options A:BAG B:TRAY C:TUBE D:TAPE REEL		