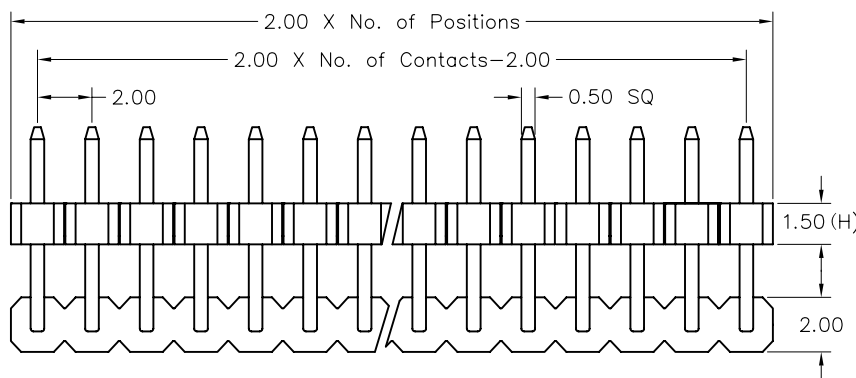


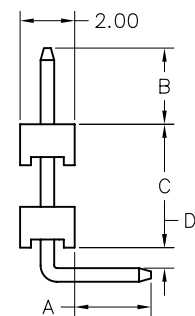
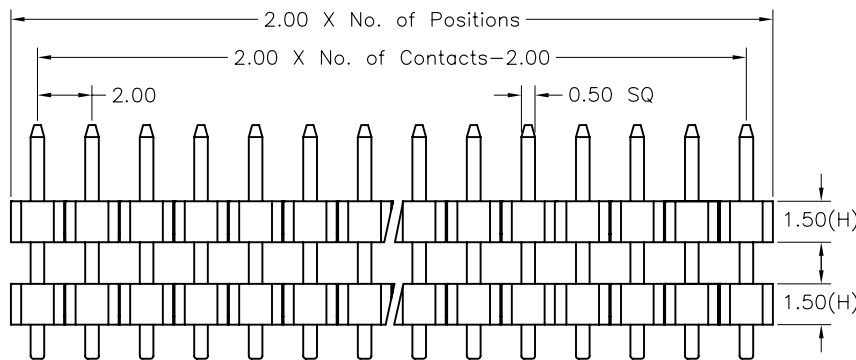
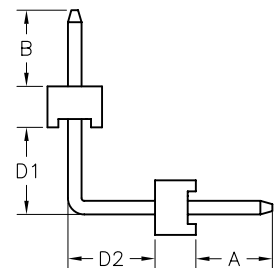
2.00mm (0.079") Board Spacer, Single Row, Right Angle Type H=1.50mm

SPECIFICATIONS

Current Rating : 1.5AMP
 Contact Resistance : 20mΩ Max.
 Insulation Resistance: 1000MΩ Min.
 Withstanding Voltage : 500V AC/minute
 Operation Temperature: -40° C to +105° C
 Contact Material : Brass
 Contact plating : Gold Flash Plated
 Insulator Material : High Temperature Thermoplastic (UL94V-0)
 Standard: PBT+30%G. F



H	1.0	1.5	2.0
---	-----	-----	-----



Recommended PCB Layout

Pin Length = A+B+C+D+1.00
 (A+B+D1+D2+2H-0.75)

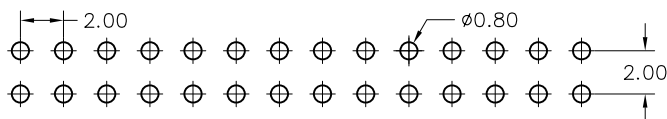
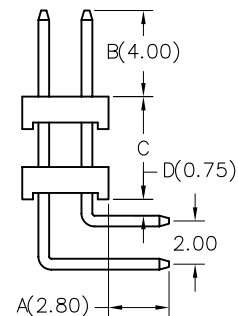
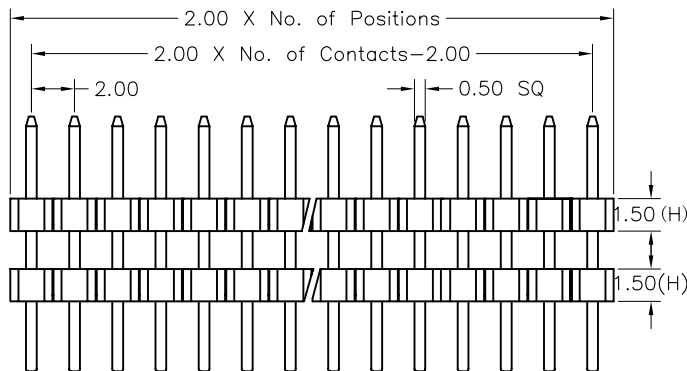
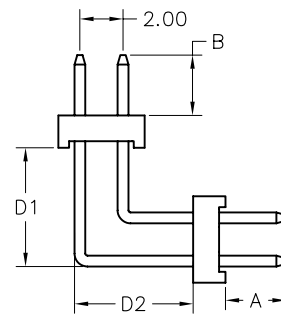
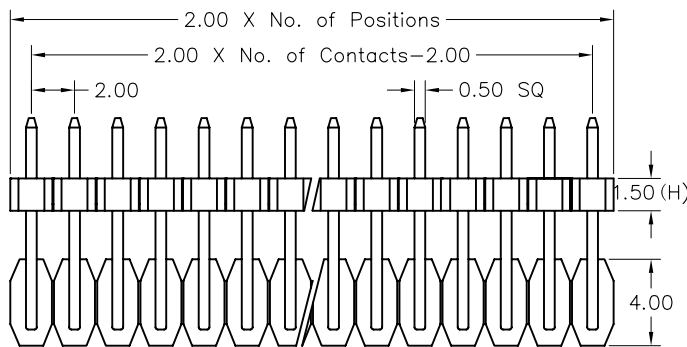
Ordering Information

PBR1152	- XX	XX	A	XX	A 1 B	X
Plastics Height 10: 1.0mm 15: 1.5mm 20: 2.0mm	No. of Pins Per Row 02~40	Contact Plating 01: Gold Flash 02: Gold 2μ'' 03: Gold 3μ'' 04: Tin Duplex Plating 06: Gold Flash/Tin(100μ'')	Serial Number	Material Type A: PBT B: NYLON 6T C: LCP D: NYLON 9T	Options A: BAG B: TRAY C: TUBE D: TAPE REEL	

2.00*2.00mm(0.079"*0.079") Board Spacer, Dual Row, Right Angle Type H=1.50mm

SPECIFICATIONS

Current Rating : 1.5AMP
 Contact Resistance : 20mΩ Max.
 Insulation Resistance: 1000MΩ Min.
 Withstanding Voltage : 500V AC/minute
 Operation Temperature: -40° C to +105° C
 Contact Material : Brass
 Contact plating : Gold Flash Plated
 Insulator Material : High Temperature Thermoplastic (UL94V-0)
 Standard: PA6T+30%G.F



Recommended PCB Layout

H	1.0	1.5	2.0
---	-----	-----	-----

$$\text{Pin Length} = A+B+C+D+1.00 (A+B+D1+D2+2H-0.75)$$

Ordering Information

PBR2152	-	XX	XX	A	XX	A	1	B	X
Plastics Height 10: 1.0mm 15: 1.5mm 20: 2.0mm		No. of Pins Per Row 02~40	Contact Plating 01: Gold Flash 02: Gold 2μ'' 03: Gold 3μ'' 04: Tin Duplex Plating 06: Gold Flash/Tin(100μ'')		Serial Number	Material Type A: PBT B: NYLON 6T C: LCP D: NYLON 9T			Options A: BAG B: TRAY C: TUBE D: TAPE REEL