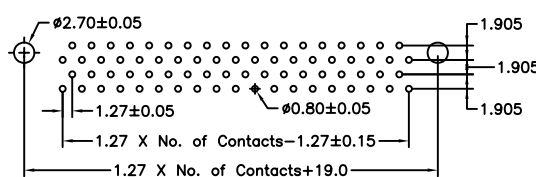
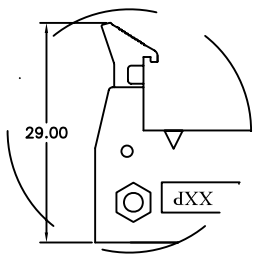
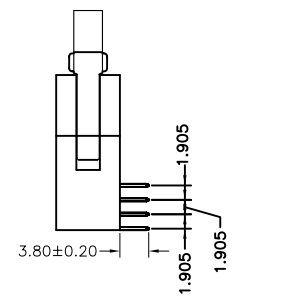
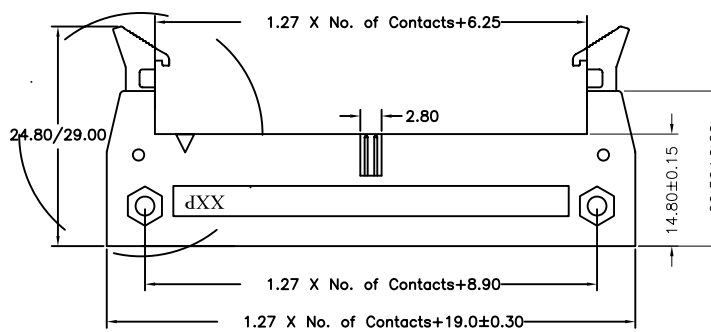
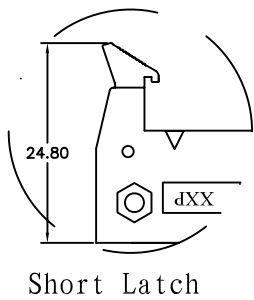
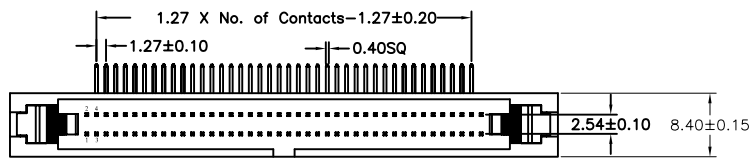


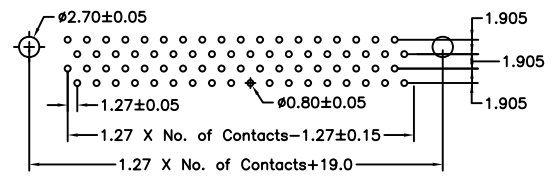
## 1. 27\*2.54mm(0.050"\*0.100")EJECTOR HEADER, RIGHT ANGLE TYPE

### SPECIFICATIONS

Current Rating : 1AMP  
 Contact Resistance : 20mΩ Max.  
 Insulation Resistance: 1000MΩ Min.  
 Withstanding Voltage : 500V AC/minute  
 Operation Temperature: -40° C to +105° C  
 Contact Material : Brass  
 Contact plating : Gold Flash Plated  
 Insulator Material : High Temperature Thermoplastic (UL94V-0)  
 Standard: PBT+30%G. F



26, 34, 50 Position



20, 32, 40, 52, 60, 68, 80, 100 Position

Recommended PCB Layout

### Ordering Information

EDR1481	-	XX	XX	A	XX	B	1	B	X
	No. of total Pins 12~100	Contact Plating 01: Gold Flash 02: Gold 2μ'' 03: Gold 3μ'' 04: Tin Duplex Plating 06: Gold Flash/Tin(100μ'')	Serial Number	Material Type A: PBT B: NYLON 6T C: LCP D: NYLON 9T	Options A: BAG B: TRAY C: TUBE D: TAPE REEL				